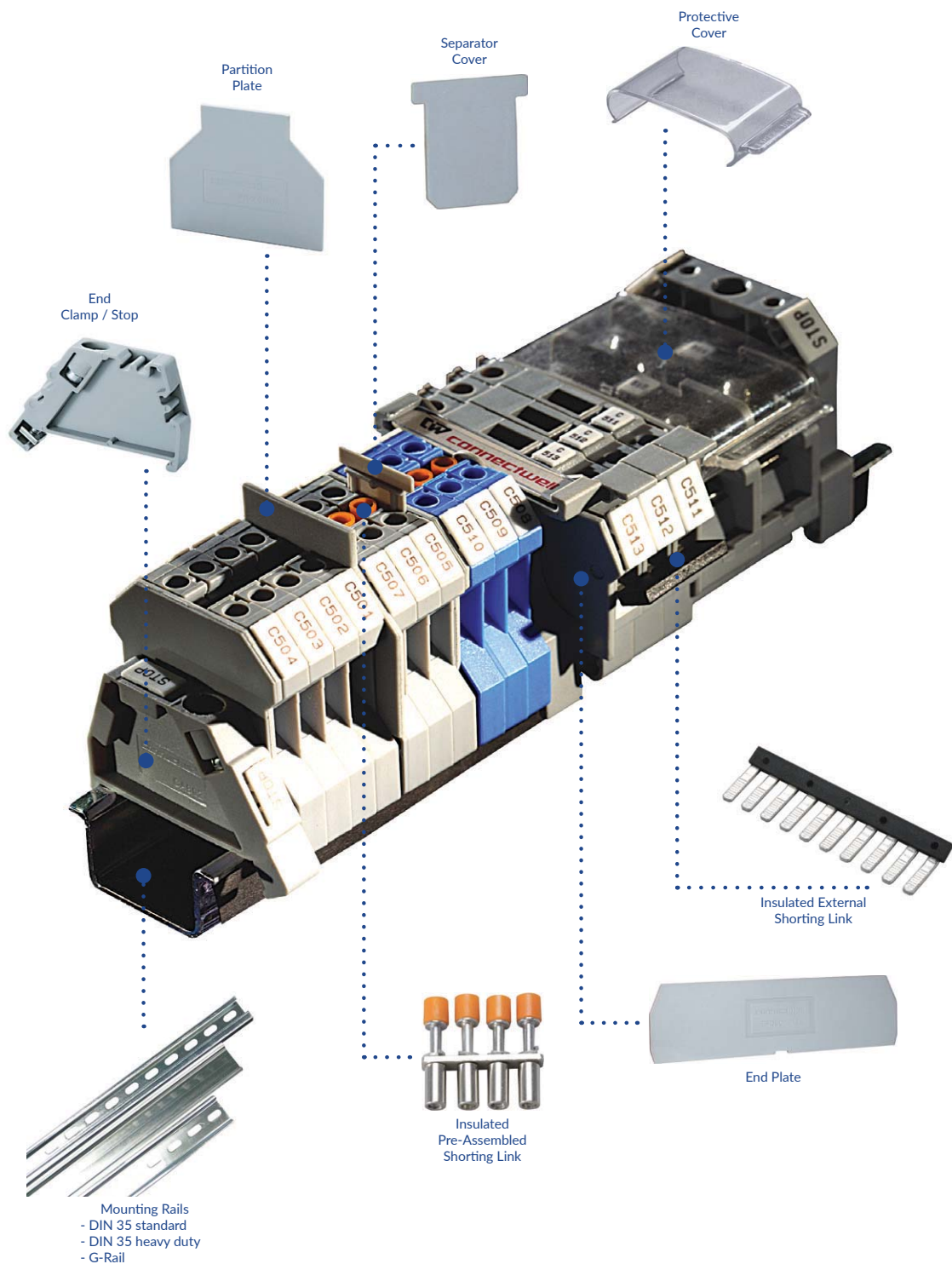


CONNECTWELL TERMINAL BLOCKS



connectwell

is an ISO 9001:2008 Company with products and systems approved by various credible third party organizations



VDE Testing & Certification Institute



Underwriters Laboratories Inc



(IECEE) CB Scheme



Cert. No.: 44 100 990789/01-E3

TUV NORD



Canadian Standards Association



ATEX Approval II GD EEx e II, II GD EEx i II



STQC Certification Services

STANDARD FEED THROUGH TERMINAL BLOCKS



CTS2.5UN

STANDARD FEED THROUGH SCREW CLAMP 2.5mm²

Description	Part No.
Conductor cross section stranded, 0.2 - 2.5mm ²	CTS2.5UN
Dimensions (L x W x H), 43 x 5 x 46.2mm	
Colour "grey", 1000 V/24A	
Connection: Feed through	

ACCESSORIES

Marking tag: K5 size

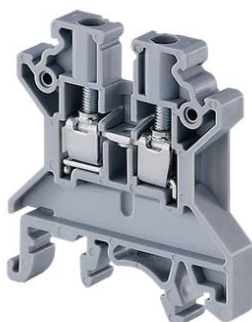
Endplate:	EP2.5/4UN
Partition plate:	PP2.5/4UN
Separation plate:	SP2.5/4UN
End clamp:	CA702

Non-insulated shorting link:	CA721/*
Insulated shorting link:	CA741/*
Comb insulated shorting link:	CA717/**

- Rated for explosive atmosphere use (EEx ell, AEx ell).

* Specify 2, 3, 4, 10 or 100 way at time of order.

** Specify 2, 3, 4, or 10 way at time of order.



CTS4UN

STANDARD FEED THROUGH SCREW CLAMP 4.0mm²

Description	Part No.
Conductor cross section mm ² stranded, 0.2 - 4mm ²	CTS4UN
Dimensions (L x W x H), 43 x 6 x 46.2mm	
Colour "grey", 1000 V/32A	
Connection: Feed through	

ACCESSORIES

Marking tag: K6 size

Endplate:	EP2.5/4UN
Partition plate:	PP2.5/4UN
Separation plate:	SP2.5/4UN
End clamp:	CA702

Non-insulated shorting link:	CA722/*
Insulated shorting link:	CA742/*
Comb insulated shorting link:	CA713/**

- Rated for explosive atmosphere use (EEx ell, AEx ell).

* Specify 2, 3, 4, 10 or 100 way at time of order.

** Specify 2, 3, 4, or 10 way at time of order.

						
EP2.5/4UN	PP2.5/4UN	SP2.5/4UN	CA702	CA721/* CA722/*	CA741/* CA742/*	CA717/** CA713/**

STANDARD FEED THROUGH TERMINAL BLOCKS



CTS6U

STANDARD FEED THROUGH SCREW CLAMP 6.0mm²

Description	Part No.
Conductor cross section stranded, 0.5 - 6 mm ²	CTS6U
Dimensions (L x W x H), 43 x 8 x 47.8 mm	
Colour "grey", 1000 V/41A	
Connection: Feed through	

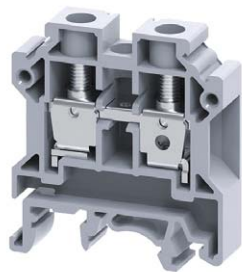
ACCESSORIES

Marking tag: K8 size	
Endplate:	EP6/10U
Partition plate:	PP6/10U
Separation plate:	SP6/10U
End clamp:	CA702
Non-insulated shorting link:	CA723/*
Insulated shorting link:	CA743/*
Comb Insulated shorting link:	CA710/**

- Rated for explosive atmosphere use (EEx ell, AEx ell).

* Specify 2, 3, 4, 10 or 100 way at time of order.

** Specify 2, 3, 4, or 10 way at time of order.



CTS10U

STANDARD FEED THROUGH SCREW CLAMP 10mm²

Description	Part No.
Conductor cross section stranded, 0.5 - 10mm ²	CTS10U
Dimensions (L x W x H), 43 x 10 x 47.8 mm	
Colour "grey", 1000 V/57A	
Connection: Feed through	

ACCESSORIES

Marking tag: K10 size	
Endplate:	EP6/10U
Partition plate:	PP6/10U
Separation plate:	SP6/10U
End clamp:	CA702
Non-insulated shorting link:	CA724/*
Insulated shorting link:	CA744/*
Comb Insulated shorting link:	CA718/**

- Rated for explosive atmosphere use (EEx ell, AEx ell).

* Specify 2, 3, 4, 10 or 100 way at time of order.

** Specify 2, 3, 4, or 10 way at time of order.

						
EP6/10U	PP6/10U	SP6/10U	CA702	CA723/* CA724/*	CA743/* CA744/*	CA710/** CA718/**

STANDARD FEED THROUGH TERMINAL BLOCKS



CTS16U

STANDARD FEED THROUGH SCREW CLAMP 16mm²

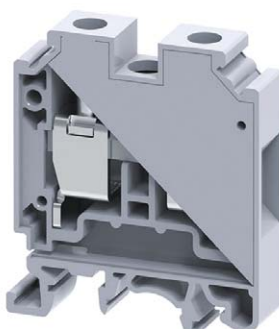
Description	Part No.
Conductor cross section stranded, 0.2 - 16mm ²	CTS16U
Dimensions (L x W x H), 43 x 12 x 47.8 mm	
Colour "grey", 1000 V/76A	
Connection: Feed through	

ACCESSORIES

Marking tag: K12 size	
Separation plate:	SP6/10U
End clamp:	CA702
Non-insulated shorting link:	CA751/*
Insulated shorting link:	CA761/*

- Rated for explosive atmosphere use (EEx ell).

* Specify 2, 3, 4 or 10 way at time of order.



CTS25UN

STANDARD FEED THROUGH SCREW CLAMP 25mm²

Description	Part No.
Conductor cross section stranded, 4 - 25mm ²	CTS25UN
Dimensions (L x W x H), 49 x 12 x 57.2mm	
Colour "grey", 1000 V/101A	
Connection: Feed through	

ACCESSORIES

Marking tag: K12 size	
Partition plate:	PP25UN
End clamp:	CA702
Shorting link:	CA725/*
Insulated Shorting link:	CA745/*

- Rated for explosive atmosphere use (EEx ell).

* Specify 2, 3, 4 or 10 way at time of order.

				
SP6/10U	PP25UN	CA702	CA751/* CA725/*	CA761/* CA745/*

STANDARD FEED THROUGH TERMINAL BLOCKS



CTS35UN

STANDARD FEED THROUGH SCREW CLAMP 35mm²

Description	Part No.
Conductor cross section stranded, 4 - 35mm ²	CTS35UN
Dimensions (L x W x H), 50.5 x 16 x 59.2mm	
Colour "grey", 1000 V/125A	
Connection: Feed through	

ACCESSORIES

Marking tag: K16 size	
Partition plate:	PP35UN
End clamp:	CA702
Non-insulated shorting link:	CA771/*
Insulated shorting link:	CA781/*

- Rated for explosive atmosphere use (EEx ell).
* Specify 2, 3, 4, or 10 way at time of order.



CTS50/70N

STANDARD FEED THROUGH SCREW CLAMP 70mm²

Description	Part No.
Conductor cross section stranded, 10 - 70mm ²	CTS50/70N
Dimensions (L x W x H), 77.3 x 20.5 x 71.1mm	
Colour "grey", 1000 V/192A	
Connection: Feed through	

ACCESSORIES

Marking tag: K16 size	
End clamp:	CA202
Screw-less end clamp:	
Non-insulated shorting link:	CA628/*
Auxiliary Terminal:	AUX6

* Specify 2 or 3 way at time of order.



CTS95/120N

STANDARD FEED THROUGH SCREW CLAMP 120mm²

Description	Part No.
Conductor cross section stranded, 25 - 120mm ²	CTS95/120N
Dimensions (L x W x H), 84.5 x 27 x 83mm	
Colour "grey", 1000 V/269A	
Connection: Feed through	

ACCESSORIES

Marking tag: K16 size	
End clamp:	CA202
Screw-less end clamp:	CA103
Non-insulated shorting link:	CA629/*
Auxiliary Terminal:	AUX6

* Specify 2 or 3 way at time of order.

						
PP35UN	CA103	CA202	CA702	CA771/* CA628/* CA629/*	CA781/*	AUX6

STANDARD FEED THROUGH TERMINAL BLOCKS



CMC1-2

MULTIPLE CONNECTION SCREW CLAMP

4mm²

Description	Part No.
Conductor cross section stranded, 0.2 - 4.0mm ²	CMC1-2
Dimensions (L x W x H), 46.5 x 6 x 49.5mm	
Colour "grey", 630V/32A	
Connection: 1 IN / 2 OUT	

ACCESSORIES

Marking tag: K6 size	
Endplate:	EPCMC1-2
End clamp:	CA702
Non-insulated shorting link:	CA722/*
Insulated shorting link:	CA742/*
Comb insulated shorting link:	CA713/**

* Specify 2, 3, 4, 10 or 100 way at time of order.

** Specify 2, 3, 4 or 10 way at time of order.



CMC2-2

Description	Part No.
Conductor cross section stranded, 0.2 - 4.0mm ²	CMC2-2
Dimensions (L x W x H), 65 x 6 x 53.4mm	
Colour "grey", 630V/32A	
Connection: 2 IN / 2 OUT	

ACCESSORIES

Marking tag: K6 size	
Endplate:	EPCMC2-2
End clamp:	CA702
Non-insulated shorting link:	CA722/*
Insulated shorting link:	CA742/*
Comb insulated shorting link:	CA713/**

* Specify 2, 3, 4, 10 or 100 way at time of order.

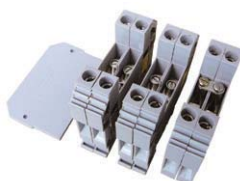
** Specify 2, 3, 4 or 10 way at time of order.



CT TEST LINK

CURRENT TRANSFORMERS (CT) TEST LINKS

Description	Part No.
Connection: To suit 1 CT	CT TEST LINK
Conductor cross section stranded, 1.5 - 10mm ²	
Dimensions (L x W x H), 63 x 19 x 58.7mm	
Colour "grey", 160V/10A	
Kit includes 1x CDTTUSH terminal and 1x EPCDTTU endplate.	



CT TEST LINK-3

Connection: To suit 3 CT	CT TEST LINK-3
Conductor cross section stranded, 1.5 - 6.0mm ²	
Dimensions (L x W x H), 63 x 51 x 58.7mm	
Colour "grey", 160V/10A	
Kit includes 3x CDTTUSH terminals and 1x EPCDTTU endplate.	

ACCESSORIES

Marking tag: K8 size	
----------------------	--

 EPCMC1-2	 CA702	 CA722/*	 CA742/*	 CA713/**
---	--	--	--	---